

C4

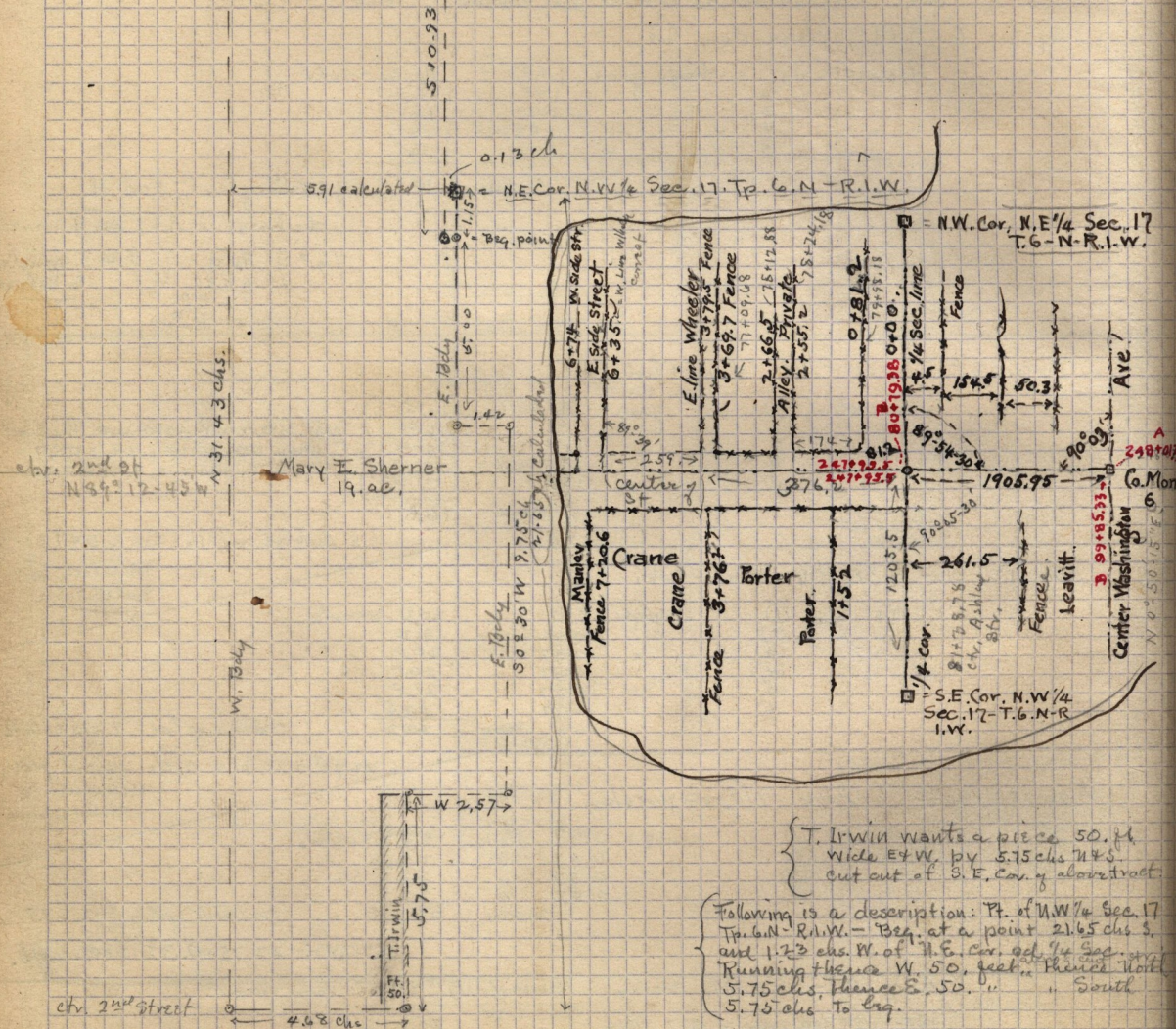
P. 290 - Peter L. Sherner to Mary F. Sherner -

Pt 4-quarter Sec. Beg. 1.15 chs. S. of N.E. cor. of N.W. 1/4 Sec. 17. T. 6. N. R. 1. W.
 S. 5.0° chs - E. 1.42 chs. S. 1/2 W. 9.75 chs - W. 2.57 chs. S. 5.75 chs W. 4.68 ch.
 N. 31.43 chs E. 5.78 ch. S. 10.93 ch. - W. 0.65 chs. to beg. 19 acres.

(description does not close to beginning)

(Survey notes continued on page 66)
 See page 91.

See also p. 116-117-



T. Irwin wants a piece 50. ft wide E & W. by 5.75 chs N & S cut out of S.E. Cor. of above tract.

Following is a description: Pt. of N.W. 1/4 Sec. 17 T. 6. N. R. 1. W. - Beg. at a point 21.65 chs S. and 1.23 chs W. of N.E. Cor. of 1/4 Sec. 17. Running thence W. 50. feet to Point North 5.75 chs. thence E. 50. '' South 5.75 chs to beg.